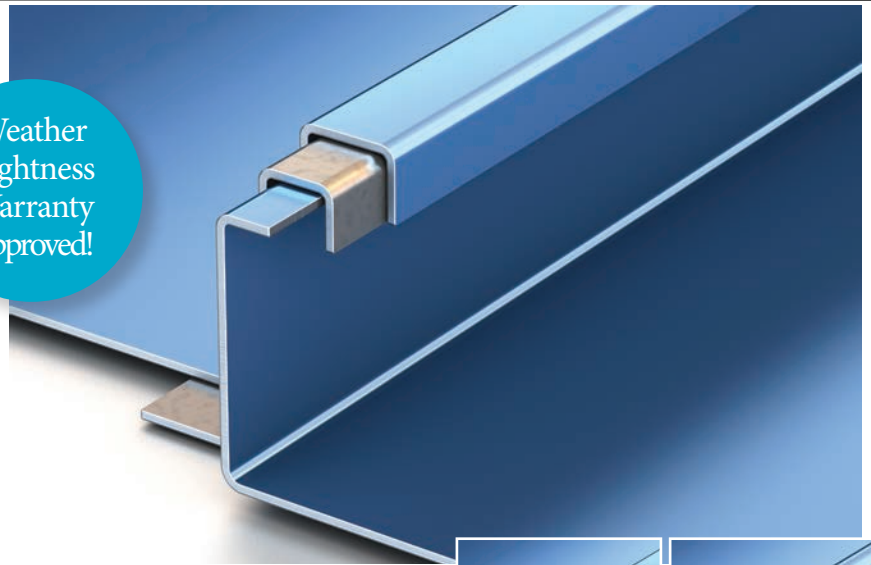


## TRI-BUILT® 150SS Profile

### Residential Metal Roofing Systems

Our TRI-BUILT® 150SS roof system will lend striking dimension to any architectural design. This versatile 1-1/2" mechanically seamed panel can be curved to a wide range of radiuses and applications – from barrel roofs to conical shapes and more. Concealed fasteners and a floating clip system reduce the effect of thermal stresses on the panels, helping to maintain a beautifully smooth, uniform appearance despite fluctuations in temperature.

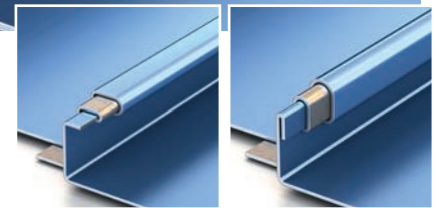
Weather  
Tightness  
Warranty  
Approved!



#### Ideal Application:

Commercial

Residential



Single lock panel

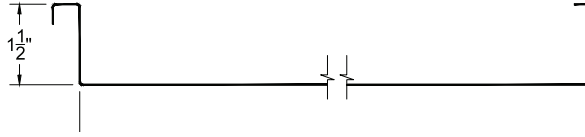
Double lock panel



**Available widths:**

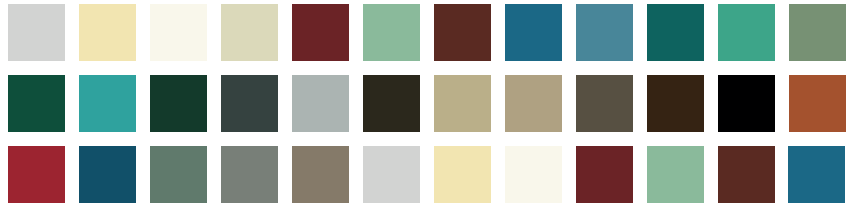
16"

\*TRI-BUILT® Metals design pressures, wind uplifts and test reports are for specific deck attachments, material gauges, clip spacing and panel widths.



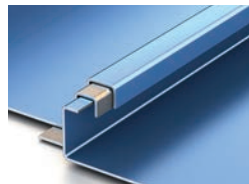
**Substrates available:**

- Galvalume® – 24ga and 26ga
- Drexlumex® – 24ga and 26ga
- Aluminum – .032"
- Copper – 16 oz and lead-coated copper

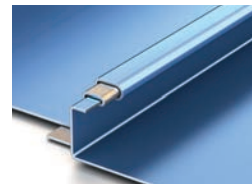


**Profile Options:**

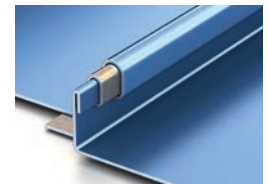
- Single lock panel
- Double lock panel
- Radius panel (single or double lock)



Unseamed panel



Single lock panel



Double lock panel

**Finishes and product warranty:**

Available in a variety of coatings and colors by Valspar.



Galvalume® Substrate:  
High-performance painted metal roofing product, carefully tensioned leveled for superior flatness.

**35 YEAR WARRANTY**  
35-Year Non Pro-rated PVDF Paint Warranty

Aluminum Substrate:  
High-performance painted metal roofing product, carefully tensioned leveled for superior flatness.

**35 YEAR WARRANTY**  
35-Year Non Pro-rated PVDF Paint Warranty

Drexlumex® Substrate:  
Mill finished Galvalume® with a two-sided, clear acrylic finish.

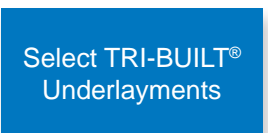
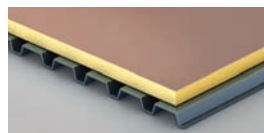
**25 YEAR WARRANTY**  
25-Year Non Pro-rated TRI-BUILT® Warranty (Acrylic Coated Galvalume)

**Production options:**

Factory made or field rolled to exact lengths  
Optional: striation, beads, pencil ribs

**Installation:**

Can be installed over steel decking with PolyIso, or over plywood decking and TRI-BUILT® High Temperature Underlayments or Select TRI-BUILT® Synthetic Underlayments.



**Slope:**

Minimum slope 2:12



Minimum Roof Pitch:  
2:12 – low roof pitch

**Testing:**

In accordance with:



- UL 580 Wind Uplift (Class 90)
- TAS 125 Wind Uplift
- UL 1897 Extended Phase Wind Uplift
- UL 2218 Class 4 Hail Impact
- UL 790 Class A Fire Rating
- UL Environmental – SRI Third Party Verified

- ASTM E1646 Water Infiltration
- TAS 100 Wind Driven Rain
- ASTM E1680 Air Infiltration
- ASTM E1886 Missile Impact
- ASTM 2140 Static Pressure Water Head



All rights reserved. Galvalume® is a registered trademark of BEIC International, Inc. Drexlumex® is a trademark of Drexel Metals, Inc. ENERGY STAR name and logo are registered U.S. marks and are owned by the U.S. government. Colors shown represent the actual color as closely as possible. To ensure exact color for final approval, a metal color chip is available. Warranty statements mentioned are outlines: complete Limited Warranty information is available on request. No other warranty expressed or implied is applicable.