

## TRI-BUILT® Aluminum Hercules RetroDrain

### PRODUCT DESCRIPTION

One-piece spun aluminum body and heavy duty cast aluminum strainer dome and clamping ring provide strength and durability. The drain flange has a depressed sump area to facilitate water drainage from the roof surface. The TRI-BUILT® Aluminum Hercules RetroDrain incorporates TRI-BUILT® U-Flow® Seal technology for a mechanical watertight connection to PVC or cast iron pipes to prevent water from backup damage. Available in 3-in., 4-in., 5-in. and 6-in. sizes.

### FEATURES & BENEFITS

- One piece seamless body provides strength and durability without separation of the flange from the stem.
- Extra large flange allows positive attachment of roof flashing membrane while the sump area facilitates drainage.
- Simple and easy to install from rooftop in 15 to 30 minutes.
- Cast aluminum strainer dome and clamping ring.
- 12-in. long drain stem accommodates most existing field conditions with longer lengths available.

### APPLICATION

TRI-BUILT® Aluminum Hercules RetroDrains are designed to replace existing drains in re-roofing applications. Installed from the roof surface, these drains are engineered to be installed without removing the existing plumbing or fixture while providing a watertight connection to the roof system and the existing plumbing.

### APPROVALS & STANDARDS



ANSI/SPRI RD-1 is a national performance standard for retrofit roof drains. While most retrofit drains are not tested to this standard, the TRI-BUILT® Aluminum Hercules RetroDrain with TRI-BUILT® U-Flow Seal exceeds the ANSI/SPRI RD-1 standard.



### PHYSICAL DATA

PROPERTY	RESULTS
Drain Body	11 gauge (.125") spun aluminum
Flange	17½" diameter with sump area
Stem	12" length
Seal	Watertight TRI-BUILT® U-Flow mechanical seal requires TRI-BUILT® Hercules RetroDrain Screwdriver
Strainer Dome	Cast aluminum
Clamp Ring	Cast aluminum

### ORDERING INFORMATION

ITEM NO.	SIZE	DOMES TYPE	PKG	DIMENSIONAL WEIGHT
34950100	3"	Aluminum	Each	32 lbs.
34950102	4"	Aluminum	Each	32 lbs.
34950104	5"	Aluminum	Each	32 lbs.
34950106	6"	Aluminum	Each	32 lbs.
34950150	Screwdriver		Each	1 lb.

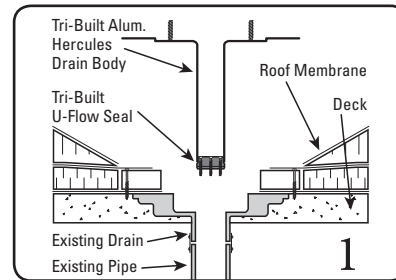
INSTALLATION INSTRUCTIONS

MEETS ANSI/SPRI RD-1 STANDARD

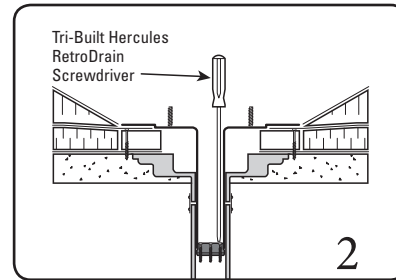
For Use With: All types of roof covers.

Job Preparation: Remove existing strainer dome and clamping ring. Remove other existing drain components as required to enable the Hercules RetroDrain flange to lie flush on roof membrane. Remove any debris or constricting materials in the existing drain pipe that interferes with proper installation.

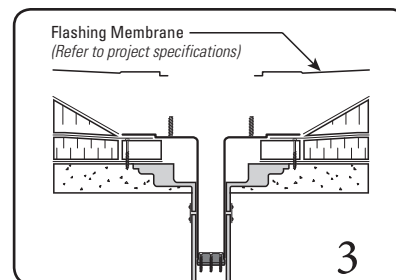
**STEP 1** Examine the existing water leader to make sure there are no elbows that prevent the drain stem from being fully inserted into the pipe. (If an elbow is present, follow directions on reverse for shortening drain stem.) Insert TRI-BUILT® U-Flow® Seal into end of drain stem and tighten screws enough to hold the seal in place during installation. Insert assembled drain into existing leader pipe until flange lies flush on roof membrane.



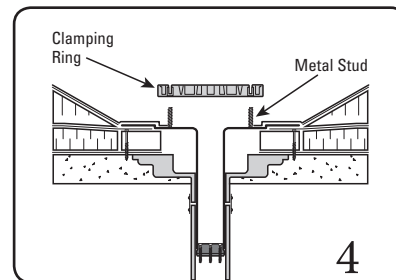
**STEP 2** Alternately tighten seal compression ring screws with the TRI-BUILT® Hercules RetroDrain Screwdriver until hand tight. TRI-BUILT® Aluminum Hercules RetroDrain body is correctly installed when pressure placed on drain body results in no vertical movement. Do not overtighten the screws.



**STEP 3** Secure the drain flange to the roof deck/nailer using a minimum of three pan-head fasteners, evenly spaced around the flange. The flashing membrane must cover and extend past the fastener head. Flashing membrane must be installed per roof membrane manufacturer's detail.



**STEP 4** Place clamping ring over metal studs. Install stainless steel nut and lock washers tightening clamping ring against membrane flashing until secure.



**STEP 5** Install strainer dome by aligning screw holes with the holes in the clamping ring. Secure with screws provided.

